





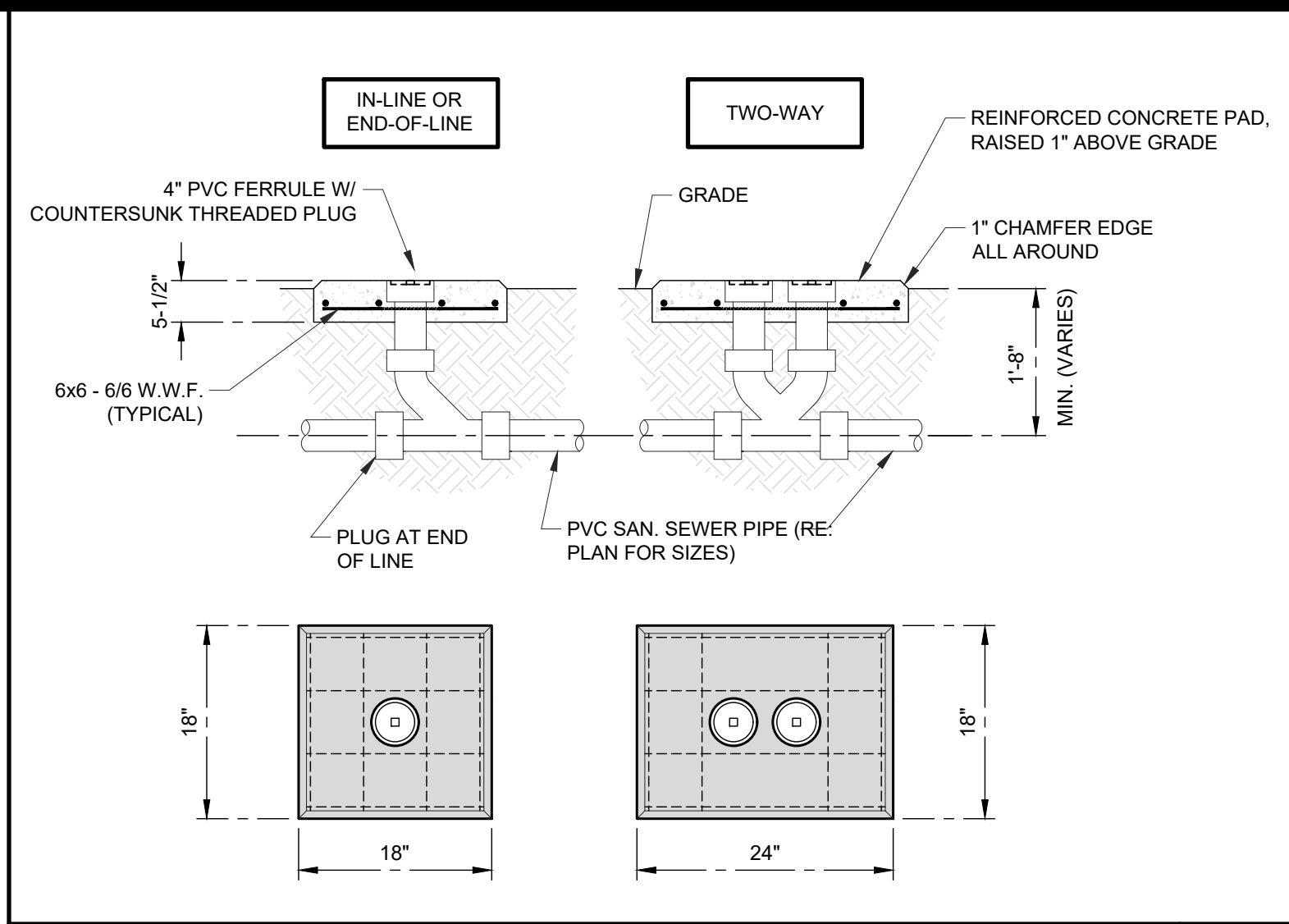




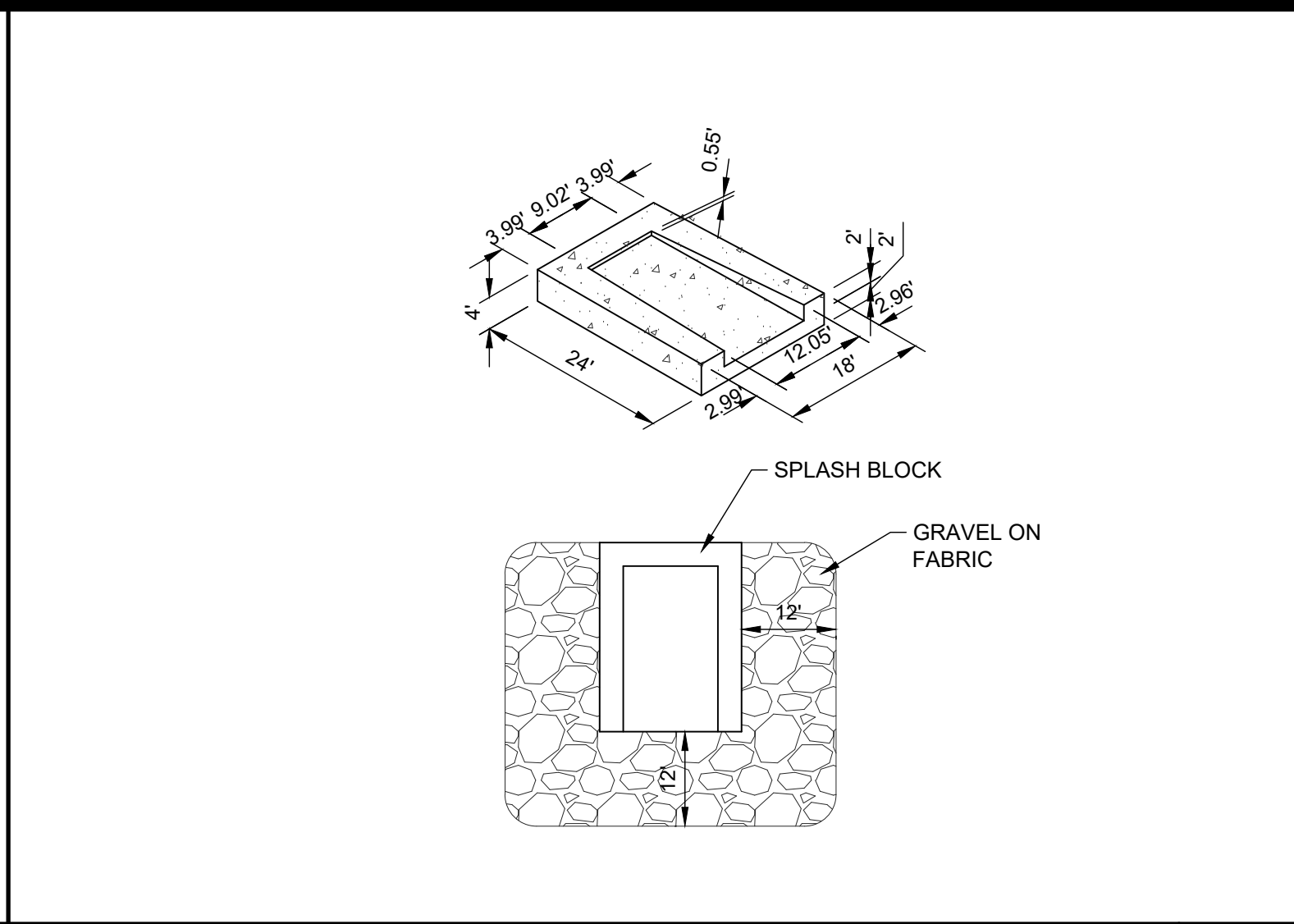
Not Used N.T.S. 12



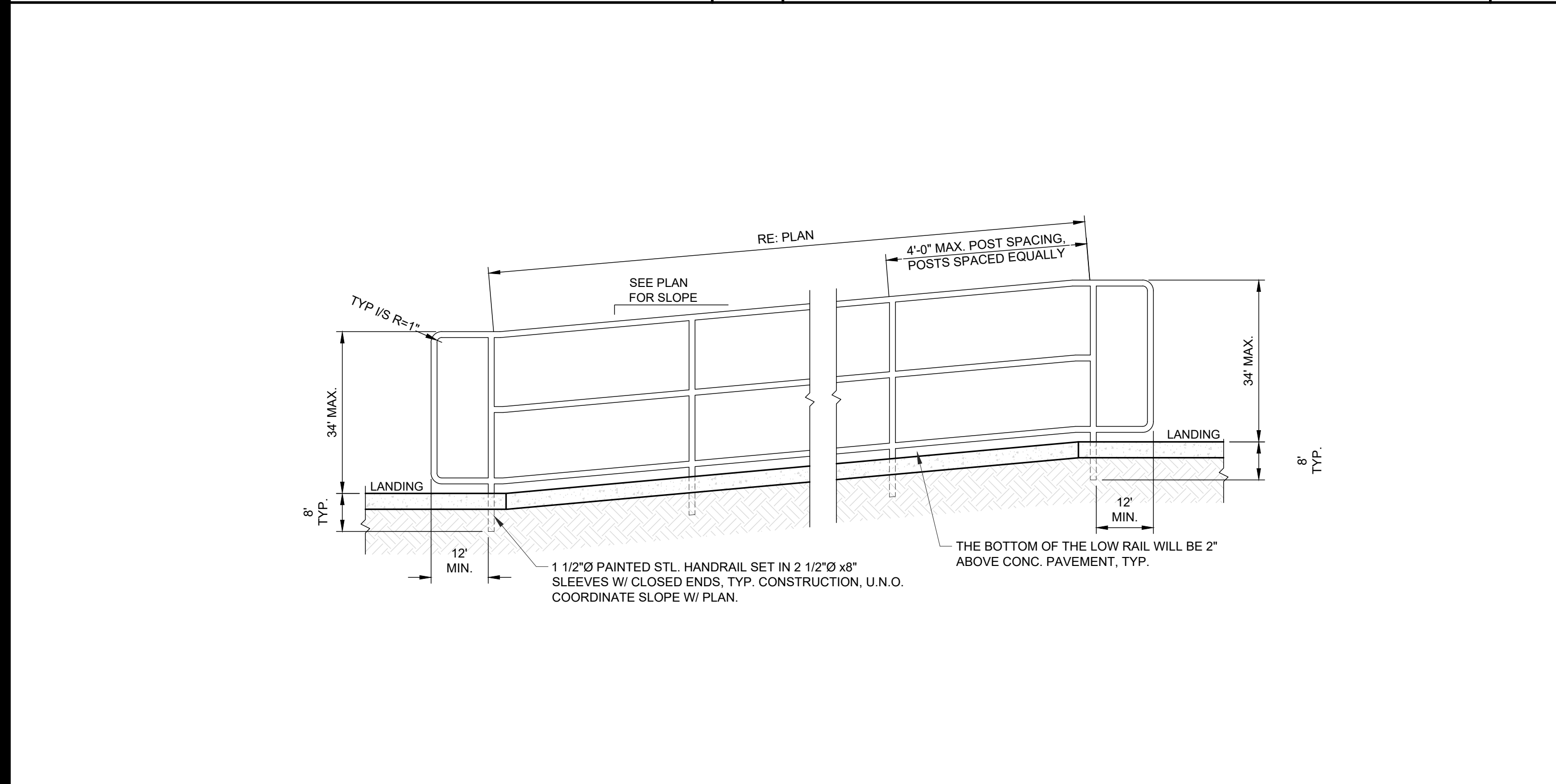
Not Used N.T.S. 11



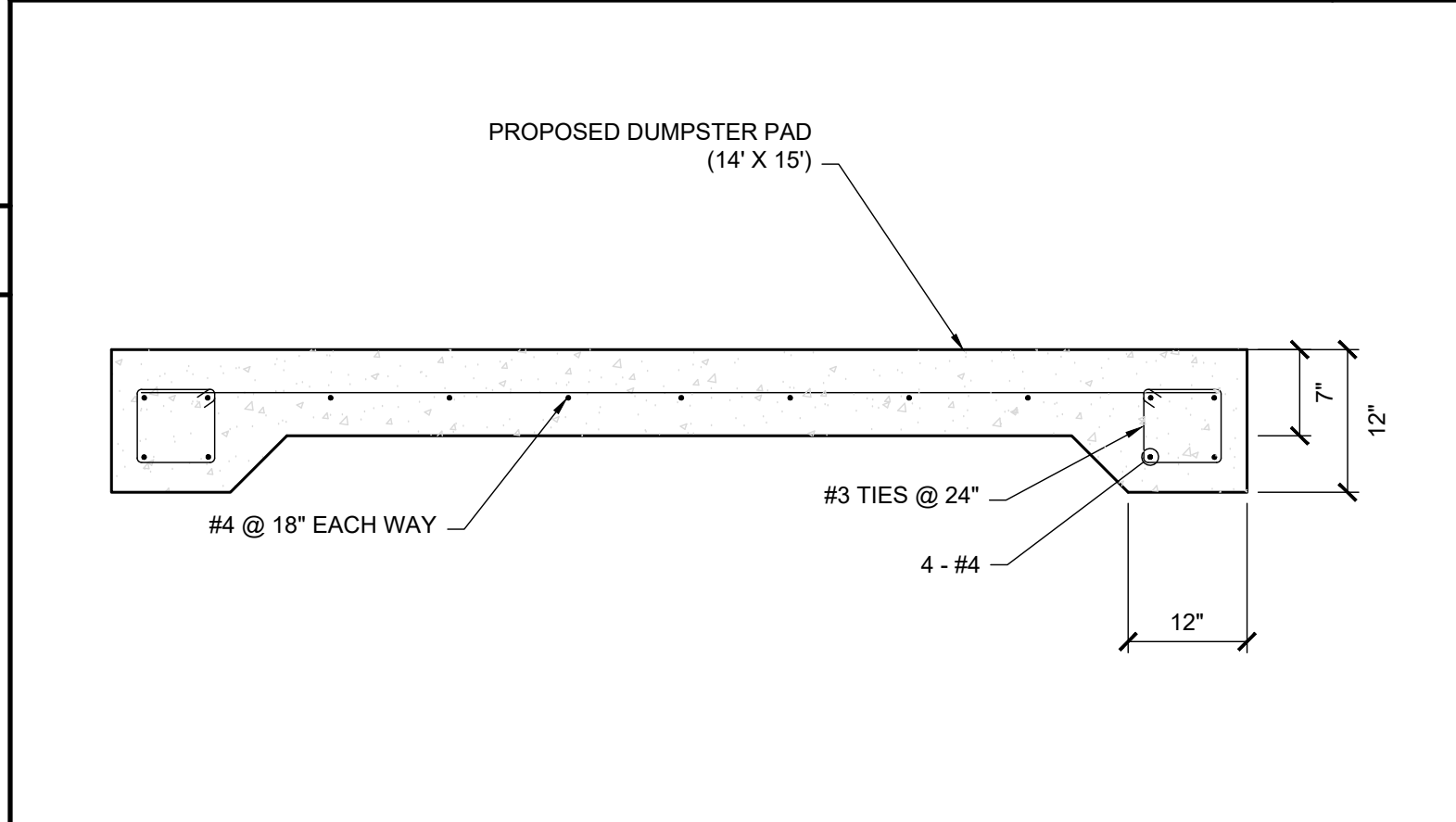
Sewer Cleanout N.T.S. 10



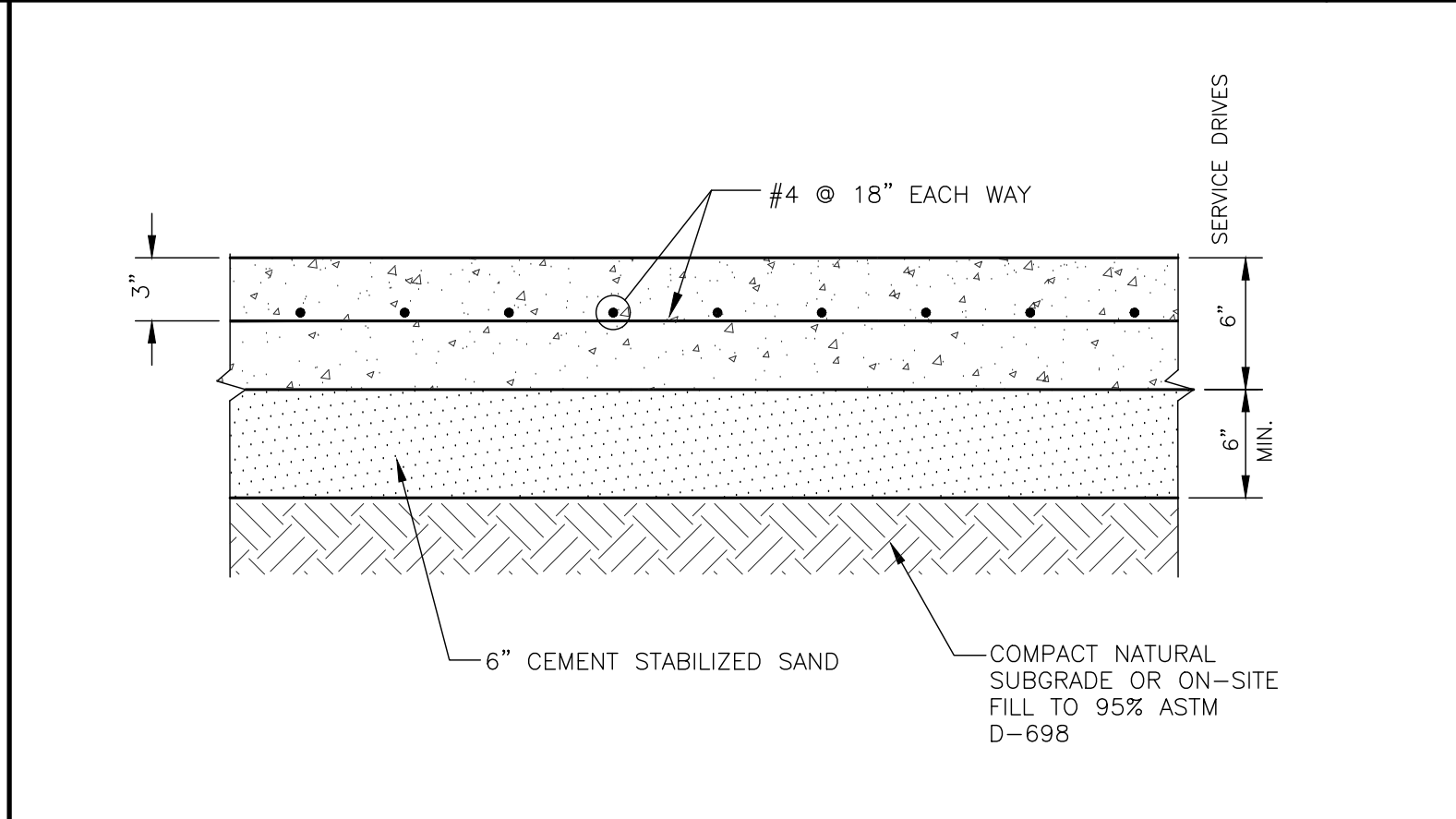
Splash Block N.T.S. 9



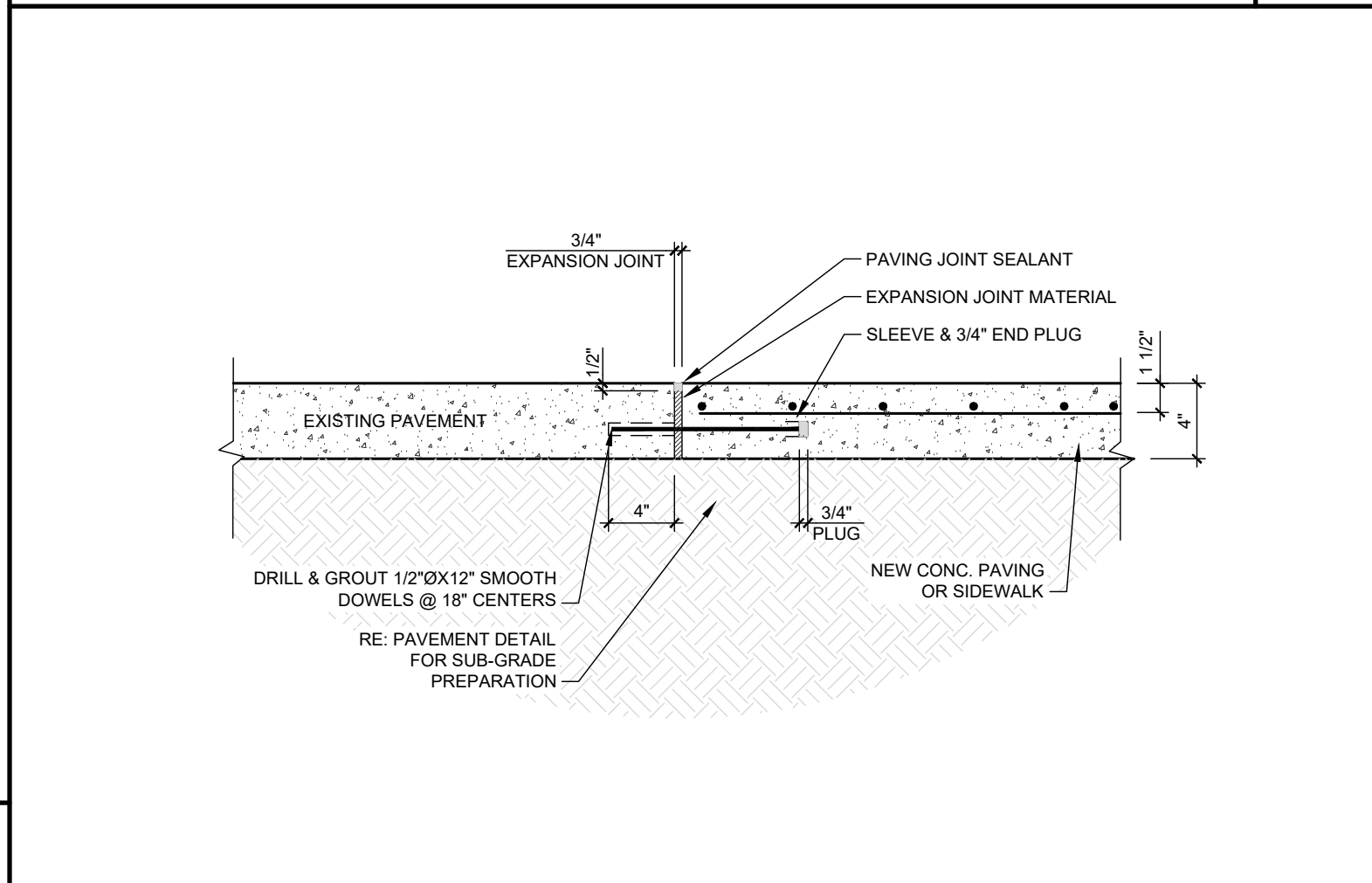
Handrail N.T.S. 6



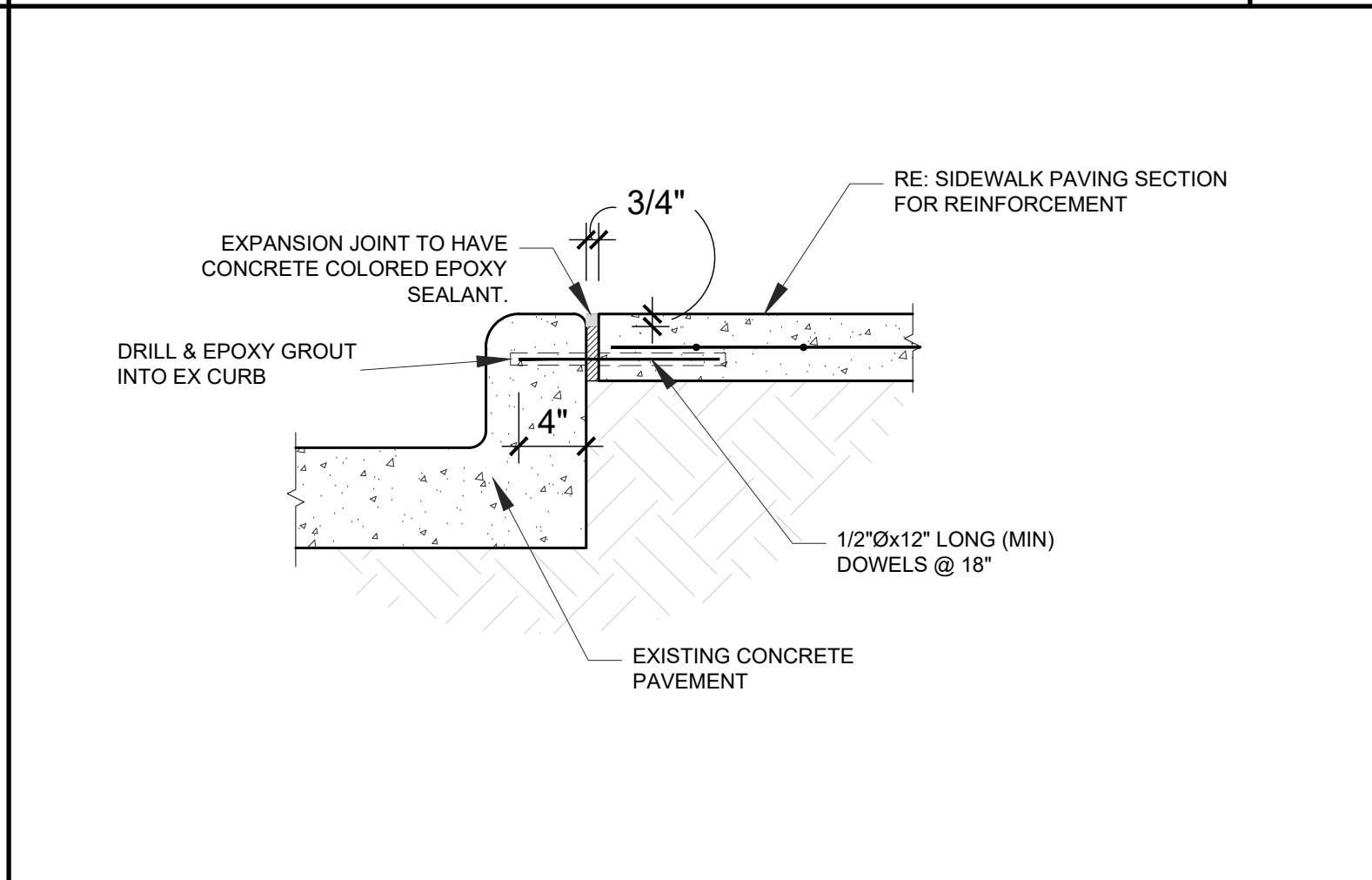
Dumpster Pad N.T.S. 8



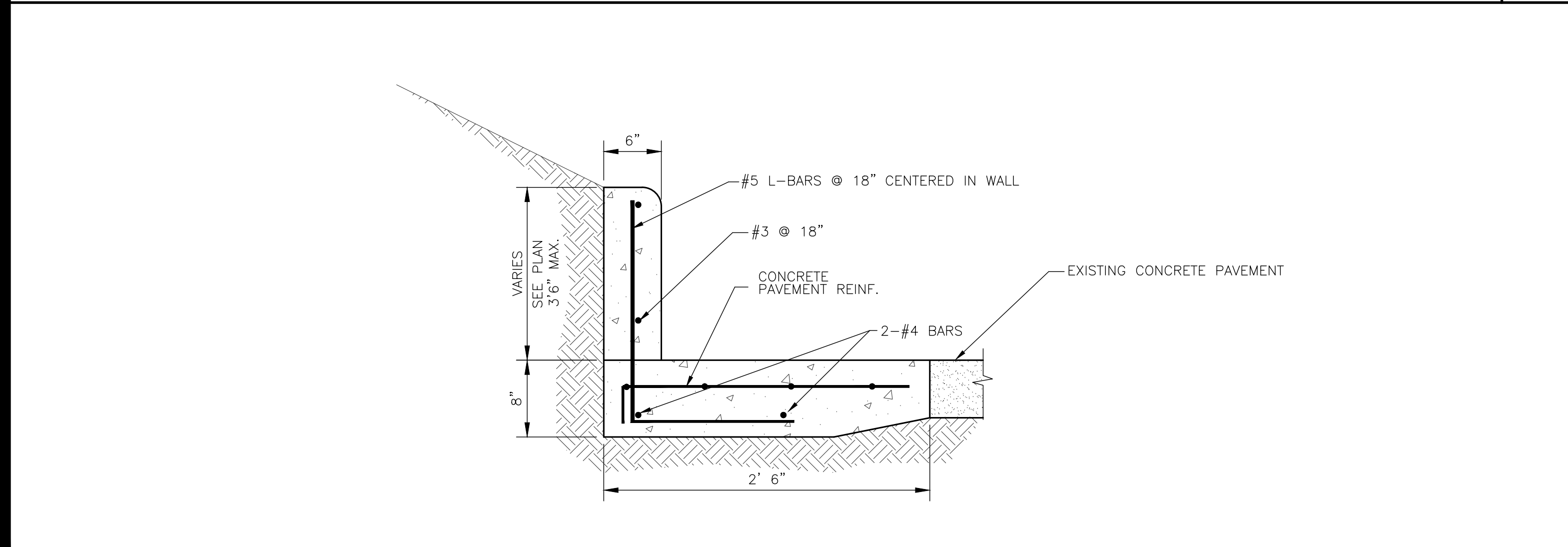
Concrete Pavement N.T.S. 7



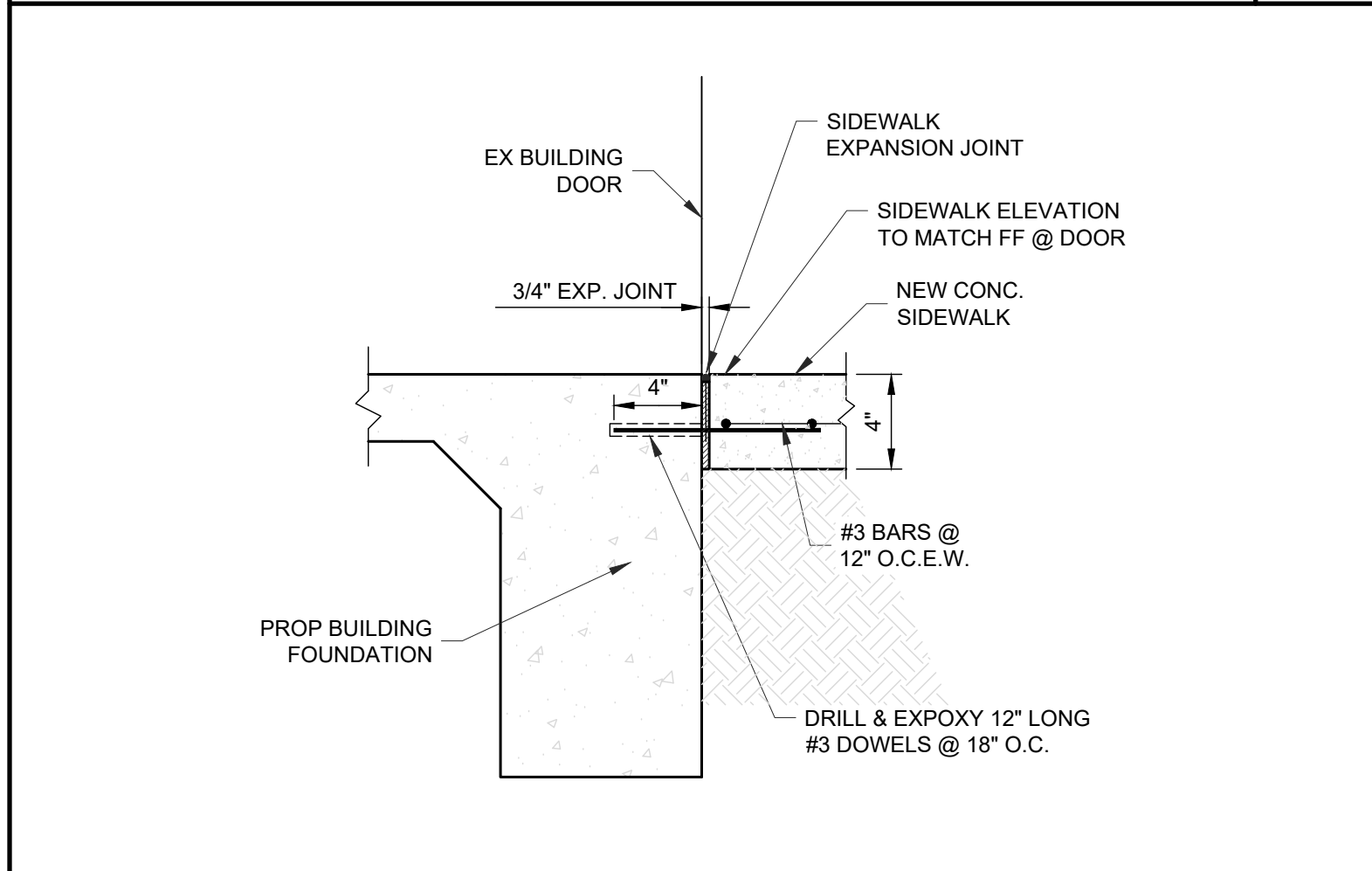
Conc to Conc Tie-In N.T.S. 5



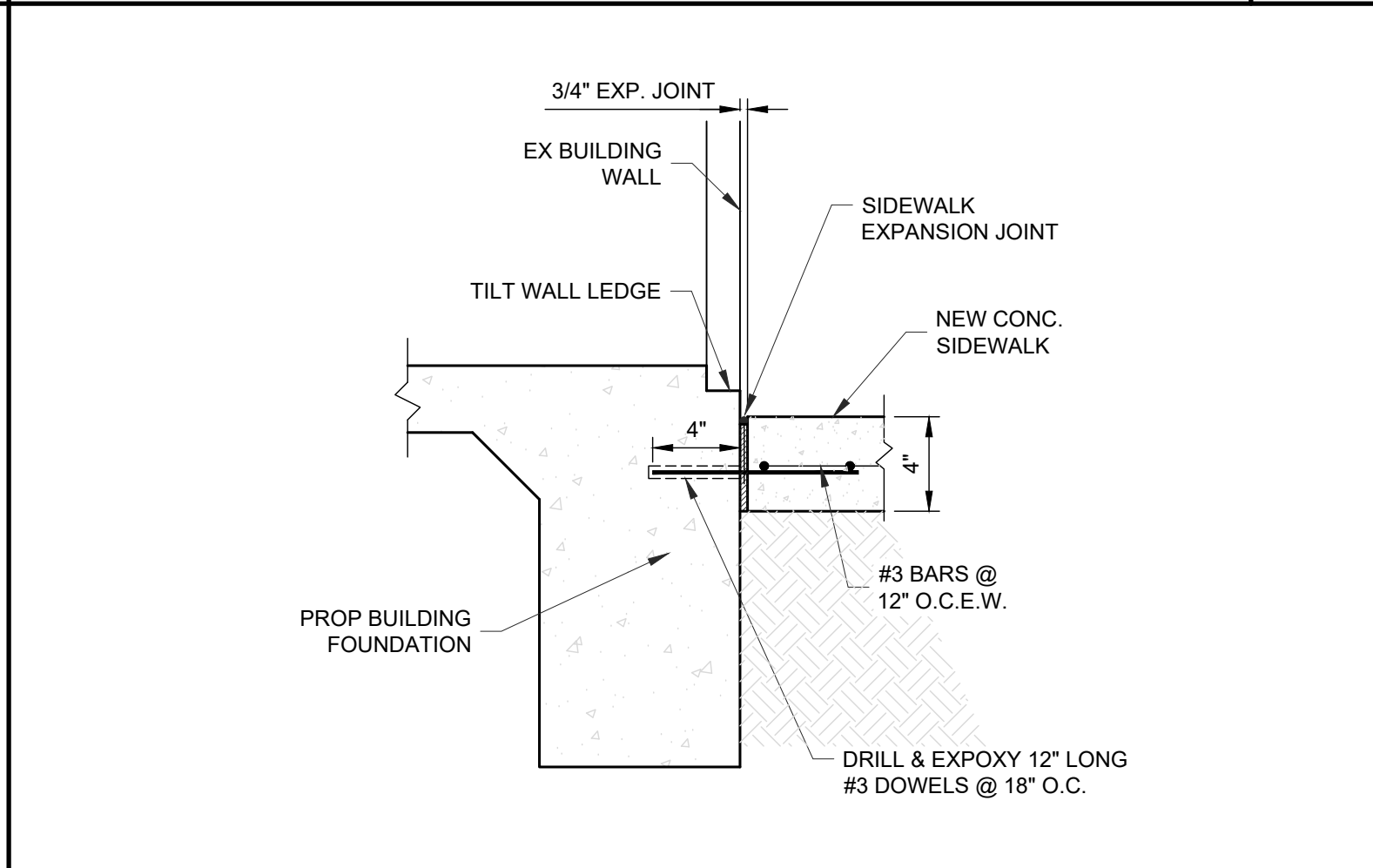
Sidewalk at Back of Curb N.T.S. 4



High Curb N.T.S. 3



Sidewalk at Building Door N.T.S. 2



Sidewalk at Building Foundation N.T.S. 1

REVISIONS	DATE	BY	ISSUED
1		JIR	###
2			
3			
4			

T.B.P.E.L.B. FIRM NO. F-413  
 T.B.P.E.L.B. FIRM NO. BR 350  
 T.B.P.E.L.B. FIRM NO. 10115000  
 ©2025 ALL RIGHTS RESERVED BY GOODWIN-LASTER, INC. UNAUTHORIZED USE OR REPRODUCTION IS PROHIBITED WITHOUT WRITTEN CONSENT FROM GOODWIN-LASTER, INC.  
 4009 CHRISTIAN DR. STE. 100 - BRYAN, TEXAS 77804 - (979) 836-9900  
 4009 CHRISTIAN DR. STE. 107 - TYLER, TEXAS 75703 - (800) 938-1380  
 6125 POSTRAVINE WOODS - TEXAS 75701 - (936) 534-1544

**GLS**  
 ARCHITECTURE · ENGINEERING · INTERIORS  
 LANDSCAPE · SURVEYING

STATE OF TEXAS  
 JOHN RUSK  
 87884  
 LICENSED PROFESSIONAL ENGINEER  
 04/22/2026

Pickleball Junction  
 MSCBH Properties  
 3175 Wildflower Dr., Bryan, Texas 77802  
 Civil Details

JOB NUMBER 582103  
 SHEET NO. C2.00

